

ASX / Media Release

ASX Code – AZM

6th April 2011



www.azumahresources.com.au

Investment Highlights:

- 1.2Moz gold JORC Code reported Mineral Resource at Wa Gold Project, NW Ghana
- 100% of 3,100km² licences hosting over 150km of prospective Birimian greenstone belt. Less than 10% explored
- Feasibility Study underway for multi-pit mining and gravity / CIL operation
- Large pipeline of drill-ready targets
- Aggressive multi-rig exploration programs focused on resource inventory increase
- Board and management team of successful explorers, mining and corporate professionals

Issued Capital:

272.69M ord. shares
12.75M unlisted options

Directors & Management:

Chairman:
Michael Atkins

Managing Director:
Stephen Stone

Non-Executive Director:
Geoff M Jones

Project Study Manager:
Alan Thompson

General Manager Geology:
Tony Greenaway

Company Secretary:
Dennis Wilkins

Contact:

Stephen Stone
Mb: +61 (0) 418 804 564
Tel: +61 (0)8 9486 7911
stone@azumahresources.com.au

More High-Grade Results Underpin Wa Gold Project

14m exceeding one ounce a tonne at flagship Kunche deposit

▶ Kunche infill drilling:

- ▶ 10m @ 2.03g/t Au from 64m (KRCD299) and 10.8m @ 3.66g/t Au from 156m
- ▶ 6.2m @ 4.74g/t Au from 121.6m (KRCD312)
- ▶ 12m @ 2.38g/t Au from 91m (KRC350)
- ▶ 20m @ 3.99g/t Au from 87m (KRC364)
- ▶ 14.1m @ 32.38g/t Au from 122m (KRCD378) incl 4m @ 80.8g/t Au from 131m incl 1m @ 170g/t Au from 131m and 6.8m @ 3.37g/t Au from 145.2m
- ▶ 24m @ 3.05g/t Au from 68m (KRC390#)
- ▶ 16m @ 1.89g/t Au from 132m (KRC395#)
- ▶ 16m @ 4.46g/t Au from 36m (KRC396#)
- ▶ 32m @ 1.24g/t Au from 56m (KRC397#)
- ▶ 12m @ 1.43g/t Au from 56m (KRC398#)

▶ Bepkong infill drilling:

- ▶ 25m @ 4.24g/t Au from 95m (BRCD202) and 5.8m @ 2.03g/t Au from 135.2m and 6.7m @ 2.16g/t Au from 147m
- ▶ 39m @ 2.35g/t Au from 83m (BRCD203) and 12m @ 2.80g/t Au from 223m

- ▶ Modelling of mineralisation to date has been very conservative
- ▶ Robust mineralisation clearly extends well below current planned Kunche and Bepkong pit floors
- ▶ Drilling to start soon at Julie deposit with expectation that the 350,100oz resource will be increased
- ▶ New Whuling and Konne targets being advanced
- ▶ 103,000m of RC-diamond-aircore drilling and 1996 power auger holes completed since commencement of 2010-2011 field season
- ▶ More than 13,000 drill samples in lab awaiting analysis
- ▶ High-resolution 15,800 line km airborne magnetic survey completes whole-of-project coverage
- ▶ \$32M working capital

Azumah Resources Limited (ASX: AZM) is pleased to report that it has received more outstanding results from infill drilling at its flagship 1.2 million-ounce Wa Gold Project in north-west Ghana providing further confidence this will lead to a resource upgrade in coming months (*Figure 1. Table 1*).

Infill RC and diamond core drilling (50m x 25m grid) within current preliminary open pit shells is being undertaken at the 516,000oz Kunche and 212,000oz Bepkong deposits. It is aimed at better defining mineralisation and upgrading existing Inferred and Indicated resources to JORC reserve status ahead of the planned resource upgrades. This will enable pit designs to be finalised in time for completion of the feasibility study in the middle of this year.

The drilling is consistently demonstrating the conservative nature of current modelling of mineralisation between existing <100m-spaced drill traverses, with many new holes returning excellent grades and increased widths. The results also confirm the continuity of outer zones that were previously excluded from resource estimation models (*Figures 2, 3 and 4*).

Kunche diamond core hole KRDC 378, in which visible gold had been reported at several intervals (*refer ASX release dated 8th March 2011*), returned an outstanding 14.1m at 32.38g/t Au from 122m (over one ounce per tonne), including 4m at 80.8g/t Au from 131m and a peak value of 170g/t Au at 131m (over five ounces per tonne).

Best intercepts from this most recent batch of results include:

► **Kunche infill drilling:**

- 10m @ 2.03g/t Au from 64m (KRCD299) and 10.8m @ 3.66g/t Au from 156m
- 6.2m @ 4.74g/t Au from 121.6m (KRCD312)
- 12m @ 2.38g/t Au from 91m (KRC350)
- 20m @ 3.99g/t Au from 87m (KRC364)
- 14.1m @ 32.38g/t Au from 122m (KRCD378) incl
 - 4m @ 80.8g/t Au from 131m incl
 - 1m @ 170g/t Au from 131m and
 - 6.8m @ 3.37g/t Au from 145.2m
- 24m @ 3.05g/t Au from 68m (KRC390#)
- 16m @ 1.89g/t Au from 132m (KRC395#)
- 16m @ 4.46g/t Au from 36m (KRC396#)
- 32m @ 1.24g/t Au from 56m (KRC397#)
- 12m @ 1.43g/t Au from 56m (KRC398#)

► **Bepkong infill drilling:**

- 25m @ 4.24g/t Au from 95m (BRCD202) and 5.8m @ 2.03g/t Au from 135.2m and 6.7m @ 2.16g/t Au from 147m
- 39m @ 2.35g/t Au from 83m (BRCD203) and 12m @ 2.80g/t Au from 223m

NB: indicates 4 metre composited samples. All other results are based on 1m individual samples

It is also apparent from recent infill drilling that **robust mineralisation extends well below current planned pit floors**. A series of diamond holes are being planned to test between 25m and 50m down dip along the full strike of Kunche and Bepkong.

The infill drilling at Kunche and Bepkong will continue through April and a similar programme will commence shortly at the 350,010oz Julie deposit. The Julie resource is open in all directions and there is a reasonable expectation that this resource will be substantially increased.

Regional exploration uncovers further highly promising anomalies

Power auger drill sampling in a completely untested area at **Konne**, 4km immediately south of Kunche, has returned a number of anomalous gold-in-regolith samples with a peak value of 70ppb Au. Follow-up aircore drilling will be undertaken shortly (*Figure 5*).

Detailed mapping at the new **Whuling** target (*refer ASX release dated 8th March 2011*), where coincident gold and base metal anomalism has been identified in a new geological setting, has identified a corridor of Birimian sediments similar in appearance to those which host the Kunche deposit to the south, including substantial quartz veining. Abandoned galamsey (illegal artisanal mining) workings on wider quartz veining associated with a mapped north-south geological contact in the area is a good indicator that these veins may be mineralised.

First-pass aircore and shallow RC drill testing at Whuling is scheduled to commence shortly. This drilling will also test an adjacent porphyry intrusive target mapped to the west.

Drilling and assaying

Since the commencement of this year's aggressive multi-rig drilling campaign, Azumah has drilled a combined **103,000m** of RC, diamond and aircore and completed **1996 power auger holes**. At present there are over **13,000 drill samples** at the laboratory awaiting analysis. These samples are from step-out exploration and infill drilling.

There are currently two multi-purpose RC–diamond core, one aircore and one Azumah-owned power auger rig on site with a second auger rig about to arrive.

High-resolution aeromagnetic survey

Data collection for a **15,800 line km** (40m flight height, 200m line spacing) high-resolution aeromagnetic survey has now been completed. Along with a **34,500 line km** survey completed last year, Azumah has now achieved **complete coverage of its entire 3,100km² Wa Gold Project tenure**. Processing and validation of this latest survey is now underway and once completed will facilitate a “whole-of-project” approach to interpretation.

Site facilities

Azumah has recently committed to the construction of a semi-permanent 50-person camp with support facilities at its current Nadowli project site HQ. The camp is designed to be shifted and incorporated into a larger proposed mine site based camp.

At Julie, a 25-person remote site portable tented camp is being established ahead of a major infill and exploration programme in and around the Julie deposit, and proposed work at the Collette, Kjersti and Josephine prospects.

Working capital

Azumah has working capital of \$32M and is more than adequately funded to complete its immediate exploration ambitions through into 2012 and its Feasibility Study due for completion mid-year.

Contact:

Stephen Stone
Managing Director
Tel: +61 (0)418 804 564
stone@azumahresources.com.au

Paul Armstrong
Read Corporate
Tel: +61 (0)419 992 9046
paul@readcorporate.com.au

Figure 1: Azumah’s extensive licence holdings in Ghana’s emerging North West encompassing over 150 strike km of Birimian greenstones and key regional structures

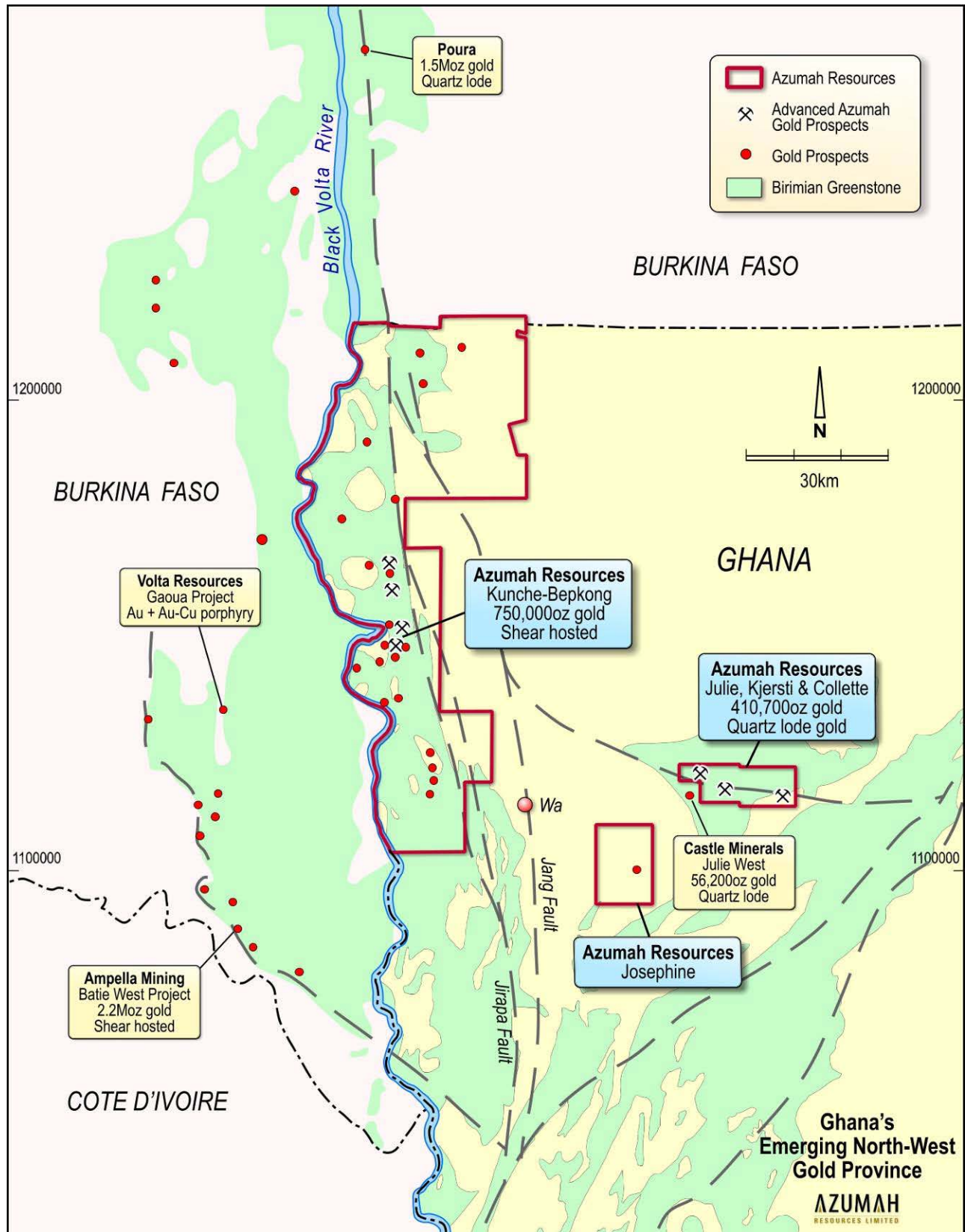


Figure 2: Latest infill drilling at Kunche returns more robust intercepts

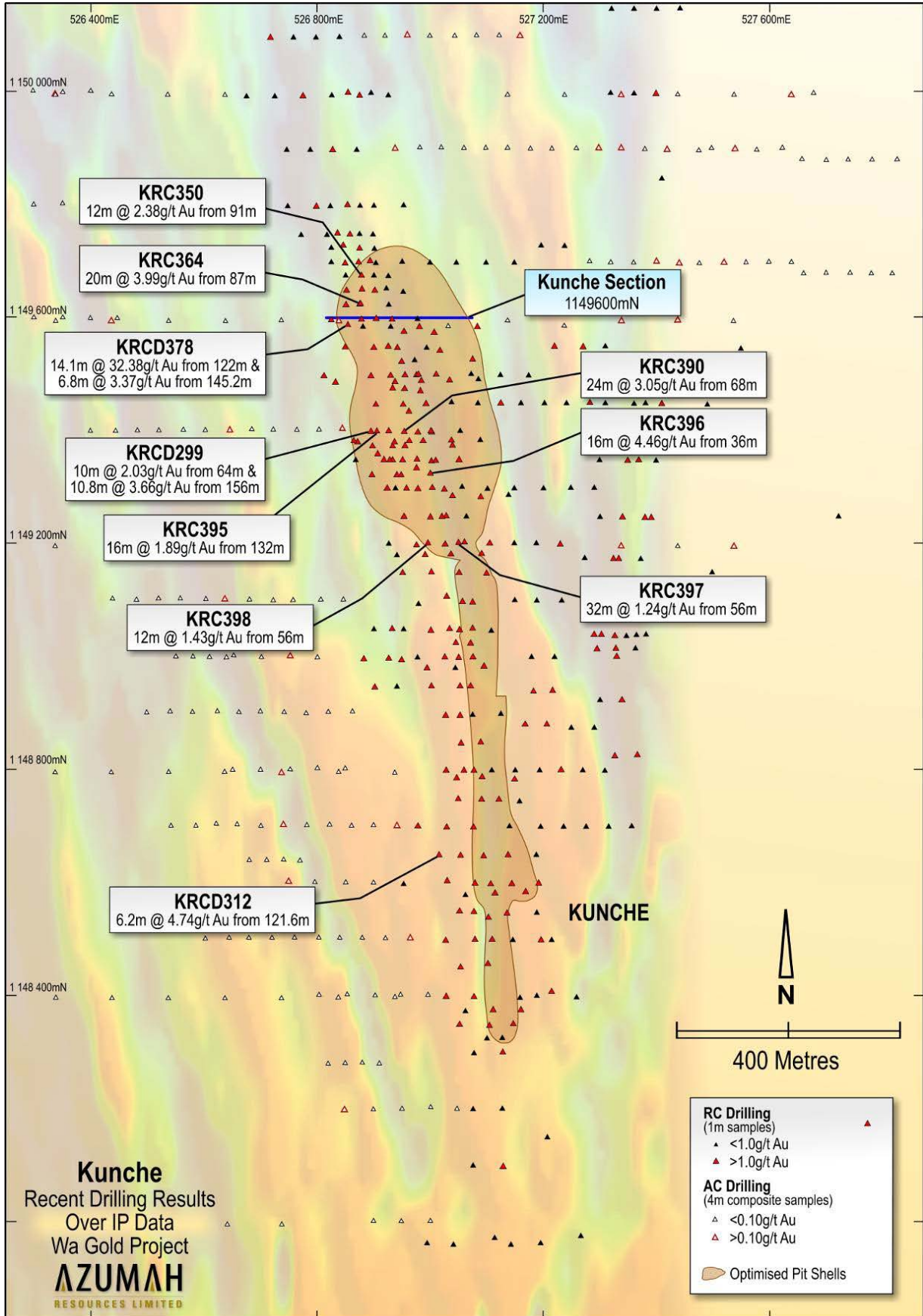


Figure 3: Kunche cross-section 1149600mN (refer Figure 2) showing latest RC/ Diamond infill drilling results and updated geological interpretation against previous interpretation

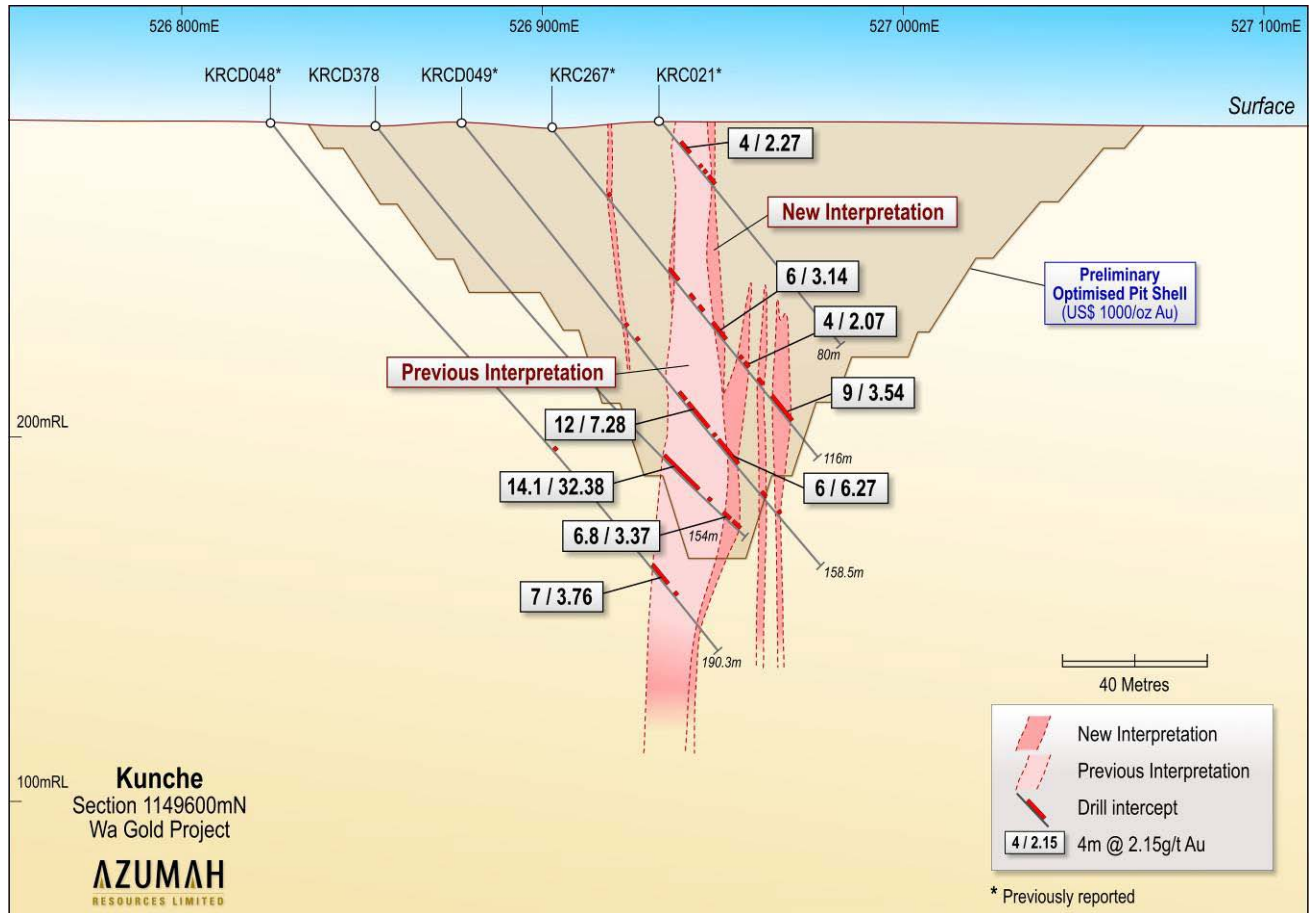


Figure 4: Latest infill drilling at Bepkong returns more robust and deeper intercepts

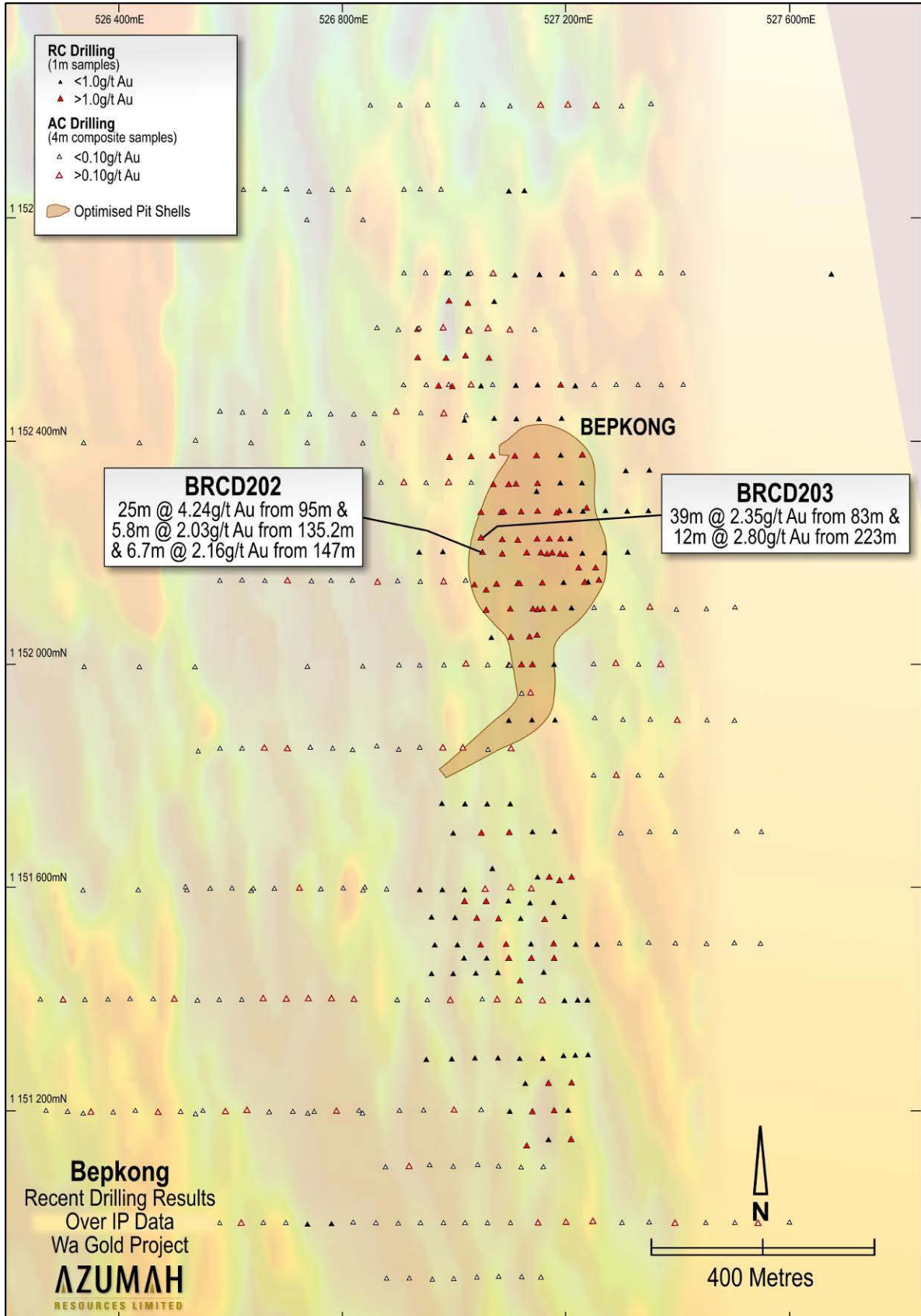


Figure 5: Whuling and Konno targets on high-resolution aeromagnetics with regional structures, anomalous gold-in-soil geochemistry, sheared granite contact zones and key gold prospects and deposits

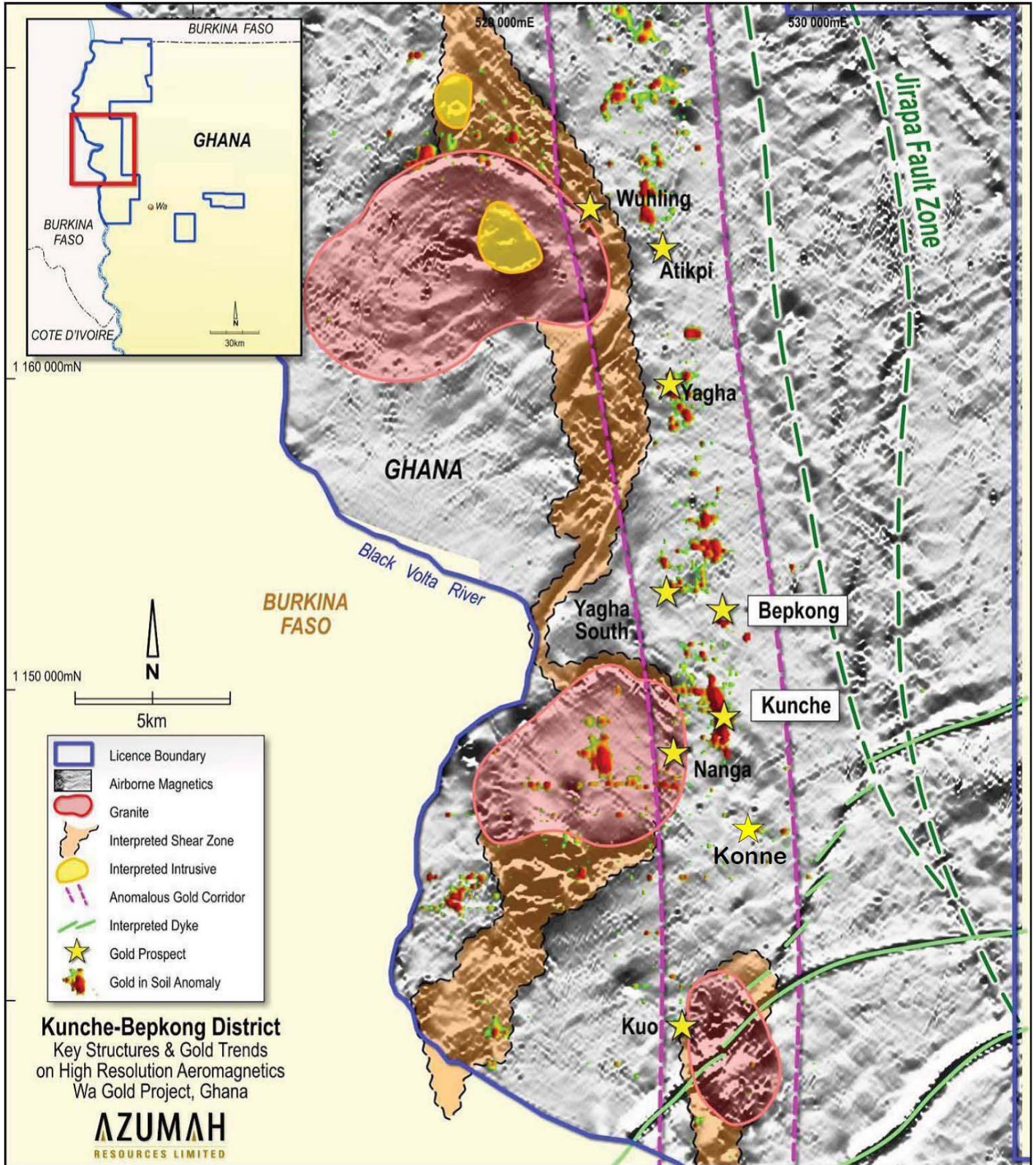


Table 1: WA Gold Project – Statement of Combined Mineral Resource Estimates

Prospect	Indicated			Inferred			Total		
	Tonnes	Grade g/t Gold	Contained Ounces Gold	Tonnes	Grade g/t Gold	Contained Ounces Gold	Tonnes	Grade g/t Gold	Contained Ounces Gold
Kunche	4,900,000	2.0	318,000	3,600,000	1.7	198,000	8,500,000	1.9	516,000
Bepkong	1,040,000	2.5	82,000	1,930,000	2.1	130,000	2,970,000	2.2	212,000
Julie	3,438,000	2.2	246,000	1,489,000	2.2	104,000	4,927,000	2.2	350,100
Collette				909,000	2.1	60,600	909,000	2.1	60,600
Atikpi				350,000	1.4	15,500	350,000	1.4	15,500
Yagha				270,000	1.2	10,800	270,000	1.2	10,800
Total	9,378,000	2.1	646,000	8,548,000	1.9	518,900	17,926,000	2.0	1,165,000

1. Kunche Mineral Resource estimation quoted for blocks with a grade greater than 1.0g/t gold. Differences may occur due to rounding errors. Refer ASX release September 2006 and details on Azumah website. Estimation completed by Runge Limited (previously Resource Evaluations Ltd) in September 2006.
2. Bepkong, Atikpi and Yagha Mineral Resource estimations quoted for blocks with a grade of greater than 0.8 g/t gold. Differences may occur due to rounding errors. Estimation completed by CSA Global Pty Ltd in August 2008.
3. Julie Mineral Resource estimate quoted for blocks with a grade greater than 1.0g/t gold. Differences may occur due to rounding errors. Estimation completed by CSA Global Pty Ltd in March 2010.
4. Collette Mineral Resource estimated for blocks with grade greater than 1.0g/t gold. Estimation completed by CSA Global Pty Ltd in September 2010
5. Details of the Bepkong, Atikpi and Yagha Mineral Resource estimation appear in ASX release dated 4th September 2008.
6. Details of the Julie Mineral Resource estimation appear in ASX release dated 24th March 2010
7. Details of the Collette Mineral Resource estimation appear in ASX release dated 10th September 2010
8. Differences may appear due to rounding

Table 2: RC-Diamond Drilling Results – April 2011

Hole ID	East	North	Depth (m)	Dip	Azimuth	From (m)	To (m)	Width (m)	Au (G/t)
Kunche resource definition infill drilling:									
KRCD299	526895	1149400	200	-50	90	29	31	2	1.83
						64	74	10	2.03
						86	90	4	1.32
						96	103	7	1.75
						156	166.8	10.8	3.66
KRCD312	527015	1148650	215	-50	90	104.7	107.2	2.5	1.28
						112.1	116	3.9	2.28
						121.6	127.8	6.2	4.74
						150	151	1	1.00
						152	154	2	1.06
						159	160	1	1.93
KRCD378	526854	1149600	154.06	-50	90	122	136.1	14.1	32.38
						131	135	4	80.8
						131	132	1	170
						139.5	140.5	1	2.18
						145.2	152	6.8	3.37
KRC389 [#]	527143	1148313	63	-50	90	36	40	4	2.94
KRC390 [#]	526955	1149402	124	-50	90	0	8	8	2.11

Hole ID	East	North	Depth (m)	Dip	Azimuth	From (m)	To (m)	Width (m)	Au (G/t)
						28	32	4	1.81
						68	92	24	3.05
						108	112	4	3.09
KRC391 [#]	527050	1149227	80	-50	90	60	64	4	1.39
KRC392 [#]	527077	1149124	80	-50	90	0	12	12	1.02
						36	44	8	1.23
KRC393 [#]	527069	1149173	80	-50	90	48	52	4	1.12
KRC394 [#]	527076	1149150	90	-50	90	48	52	4	1.41
						68	72	4	1.00
KRC395 [#]	526910	1149401	170	-50	90	8	12	4	1.34
						80	88	8	1.04
						132	148	16	1.89
KRC396 [#]	527000	1149325	100	-50	90	36	52	16	4.46
KRC397 [#]	527046	1149200	90	-50	90	56	88	32	1.24
KRC398 [#]	527000	1149201	140	-50	90	56	68	12	1.43
						92	100	8	1.44
						108	112	4	1.15
KRC399 [#]	526950	1149325	140	-50	90	4	12	8	1.61
KRC349	526900	1149676	100	-50	90	27	28	1	1.13
						34	36	2	1.13
KRC350	526878	1149676	130	-50	90	66	67	1	1.40
						68	70	2	1.09
						75	76	1	1.95
						80	81	1	1.07
						91	103	12	2.38
						107	108	1	1.28
KRC351	526893	1149702	70	-50	90	27	31	4	1.39
KRC353	526850	1149676	160	-50	90	101	102	1	1.26
KRC359	526825	1149725	140	-50	90	133	134	1	1.24
KRC360	526922	1149653	85	-50	90	0	1	1	5.33
						10	11	1	2.38
KRC361	526879	1149652	130	-50	90	25	26	1	1.89
						55	56	1	1.02
						63	74	11	2.39
						77	78	1	1.07
						89	90	1	1.84
KRC363	526875	1149625	123	-50	90	0	1	1	1.22
						52	54	2	1.70
						58	74	16	2.01
						83	90	7	1.45
KRC364	526876	1149626	160	-50	90	59	60	1	1.54

Hole ID	East	North	Depth (m)	Dip	Azimuth	From (m)	To (m)	Width (m)	Au (G/t)
						72	83	11	4.27
						87	107	20	3.99
						141	142	1	5.62
Bepkong resource definition infill drilling:									
BRCD202	527024	1152647	219	-50	90	95	120	25	4.24
				-50	90	124	127	3	1.63
						135.2	141	5.8	2.03
						147	153.7	6.7	2.16
						182.8	183.5	0.7	1.11
BRCD203	527047	1152225	260	-50	90	50	51	1	1.22
						83	122	39	2.35
						151	152	1	7.89
						161	162	1	2.40
						223	235	12	2.80
						246.1	247.2	1.1	1.76
						249.9	250.7	0.8	1.71
						255.5	257.5	2	1.76

Notes: All intersections based on 1m riffle split and 4m composited spear (denoted by #) RC and diamond core samples. Intersections selected are based on a 1.0g/t gold lower cut-off, no upper-cut applied and maximum 4m internal dilution. Intersected thicknesses are down-hole intervals. Sample analysed by 50gm Fire Assay method, SGS Tarkwa. Drill hole collars are located by GPS with accuracy \pm 5m.

Competent Persons Statement

The information in this report that relates to Exploration Results is based on information compiled by Mr Stephen Stone. Mr Stone is the Managing Director of Azumah Resources Limited. Mr Stone is a Member of The Australasian Institute of Mining and Metallurgy and has sufficient experience which is relevant to the style of mineralisation and type of deposit under consideration and to the activity which he is undertaking to qualify as a Competent Person as defined in the 2004 Edition of the 'Australasian Code for Reporting of Exploration Results, Mineral Resources and Ore Reserves'. Mr Stone consents to the inclusion in the report of the matters based on information in the form and context in which it appears.

The information in this report that relates to in-situ Mineral Resource estimates for Bepkong, Collette, Yagha and Atikpi is based on information compiled by Mr David Williams, an employee of CSA Global Pty Ltd, geological consultants. Mr Williams is the competent person for the Bepkong, Collette, Yagha and Atikpi estimates and takes overall responsibility for these. Mr Williams is a Member of The Australasian Institute of Mining and Metallurgy and has sufficient experience which is relevant to the style of mineralisation and type of deposit under consideration and to the activity which he is undertaking to qualify as a Competent Person as defined in the 2004 Edition of the 'Australasian Code for Reporting of Exploration Results, Mineral Resources and Ore Reserves'. Mr Williams consents to the inclusion in the report of the matters based on information in the form and context in which it appears.

The information in this report that relates to in-situ Mineral Resource estimate for Julie is based on information compiled by Mr Stephen Hodgson, an employee of CSA Global Pty Ltd, geological consultants. Mr Hodgson is the competent person for the Julie estimate and takes overall responsibility for this. Mr Hodgson is a Member of The Australian Institute of Geoscientists and has sufficient experience which is relevant to the style of mineralisation and type of deposit under consideration and to the activity which he is undertaking to qualify as a Competent Person as defined in the 2004 Edition of the 'Australasian Code for Reporting of Exploration Results, Mineral Resources and Ore Reserves'. Mr Hodgson consents to the inclusion in the report of the matters based on information in the form and context in which it appears.

The information in this presentation that relates to Mineral Resources at the Kunche Project is based on a resource estimate that has been audited by Mr Aaron Green, who is a full time employee of Runge Limited. Aaron Green is a Member of the Australian Institute of Geoscientists and has sufficient experience which is relevant to the style of mineralisation and type of deposit under consideration and to the activity which he is undertaking to qualify as a Competent Person as defined in the 2004 Edition of the 'Australasian Code for Reporting of Exploration Results, Mineral Resources and Ore Reserves'. Mr Green consents to the inclusion in the presentation of the matters based on information in the form and context in which it appears.

Forward Looking Statement

Statements regarding plans with respect to the Company's mineral properties are forward-looking statements. There can be no assurance that the Company's plans for development of its mineral properties will proceed as currently expected. There can also be no assurance that the Company will be able to confirm the presence of additional mineral deposits, that any mineralisation will prove to be economic or that a mine will successfully be developed on any of the Company's mineral properties.

All notes pertaining to the above referred to resource estimations can be viewed at www.azumahresources.com.au