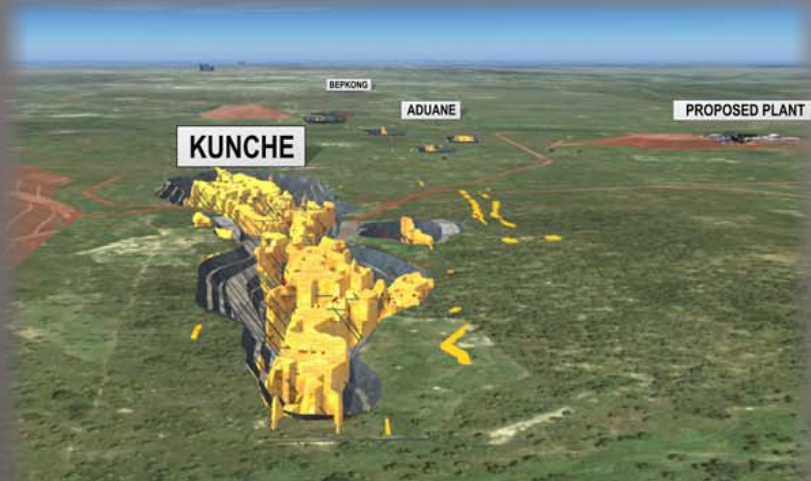
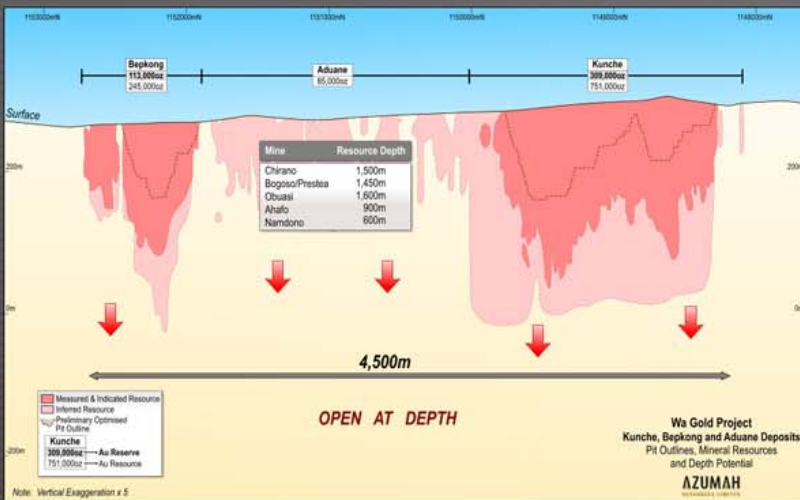


Primed For Development



- ✓ Mineral Resources: 2.1Moz M&I 1.4Moz (26Mt @ 1.6g/t)
- ✓ Ore Reserves: 624,000oz (9.1Mt @ 2.14g/t) Plus 28,400oz Mining Inventory
- ✓ Mining leases granted
- ✓ Grid power & excellent logistics
- ✓ Strong community endorsement



Process Flow Sheet (Simplified)

