

Joint Venture Election

West African gold explorer and developer Azumah Resources Limited (ASX: AZM) (“**Azumah**” or the “**Company**”) advises that Azumah has elected to allow joint venture partner, Ibaera Capital (“**Ibaera**”), to sole fund the next stage of funding of the Wa Gold Project, Ghana (“**Project**”) and completion of the Feasibility Study scheduled for year-end 2019.

As recently advised, and pursuant to an Earn-In and Shareholders Agreement (**EISA**)⁽¹⁾, Ibaera has become entitled to ownership of 42.5% of the fully paid issued capital of Azumah Resources Ghana Limited (**AZG**), the holder of all Project mineral licences⁽²⁾.

Azumah’s election will enable Ibaera to earn up to an additional 5% interest in AZG, and hence the Project, to a maximum interest of 47.5% by funding the already approved programme and budget of US\$2.25 million. The EISA provides that the actual additional interest to be earned will be determined having regard to the current value of the Project.

In deciding not to contribute, the dilution incurred by Azumah’s shareholders of their effective interest in the Project is less than if Azumah were to raise additional capital at prevailing share prices to replenish the A\$1.85 million it was required to contribute to the next stage of joint venture funding.

The Azumah Board has determined that it is prudent to preserve its present approximately A\$3.0 million working capital⁽³⁾ until the Company’s share price more fully reflects the value of its interest in the Project. It believes that this should occur as the Project is advanced closer towards the completion of a Feasibility Study, whilst also noting that the Project already comprises:

- an economically robust, rapid pay-back, long-life, plus-100,000oz per year, open-pit gold operation (subject to finalisation of a Feasibility Study)⁽⁴⁾ based on:
 - Mineral Resources of 2.8Moz⁴; and
 - Ore Reserves of 1.0Moz⁵
- the recent discovery and delineation of substantial below-pit mineralisation at the Bepkong deposit⁽⁶⁾; and
- numerous greenfields to advanced-stage, high-conviction exploration prospects within its regional-scale tenure of mainly Birimian terrain, the same rocks that host a majority of Ghana’s and West Africa’s major gold deposits.

Azumah Managing Director, Stephen Stone, commented: “Azumah looks forward to continuing to work closely with Ibaera as we enter the home straight for the delivery of a completed Feasibility Study by this year-end and to making a production decision soon after.”

¹ Refer to ASX announcement 1 September 2017 for further information on the terms of the EISA.

² Refer to ASX announcement 11 July 2019.

³ Refer to ASX announcement 12 July 2019.

⁴ Inclusive of Ore Reserves. Refer to Table A below and to ASX announcement 2 July 2019.

⁵ Refer to Table B below and to ASX announcement 30 January 2019.

⁶ Refer to Table A below and to ASX announcement 2 July 2019.

For further information please contact:

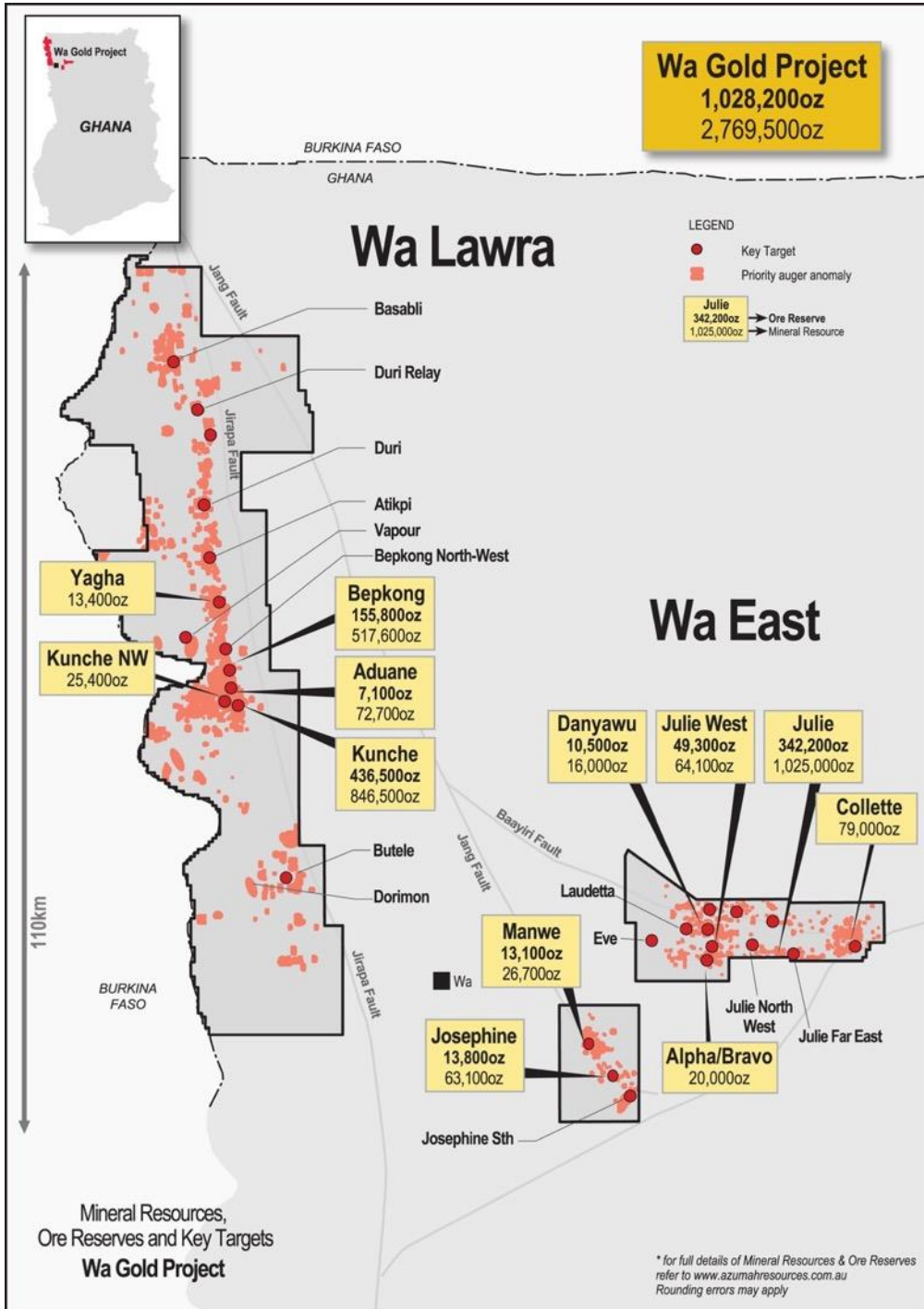
Stephen Stone
Managing Director
Mb 61 (0) 418 804 564
stone@azumahresources.com.au

Media: Peter Harris
Peter Harris & Associates
Mb 61 (0) 412 124 833

Follow us on:



Wa Gold Project Mineral Resources, Ore Reserves, Key targets and Prospects



About Azumah Resources Limited

Azumah Resources Limited is a Perth-based, ASX-listed (ASX: AZM) company focused on exploring and developing its regional-scale Wa Gold Project in the Upper West Region of Ghana, West Africa.

Three main deposits have been discovered and extensively drilled at Kunche and Bepkong, adjacent to the Black Volta River and Ghana's border with Burkina Faso, and at Julie approximately 80km to the east.

Several satellite deposits including Aduane, Kunche Northwest, Yagha, Julie West, Danyawu, Alpha/Bravo, Josephine and Collette have also been discovered and delineated.

To date, the Company has estimated a JORC 2012 Mineral Resource of 2.8Moz of gold grading 1.7g/t Au, including 1.8Moz Measured and Indicated grading 1.8g/t Au. These are evenly distributed between the Kunche-Bepkong and Wa East (Julie deposit etc.) camps.

In January 2019, an Ore Reserve estimate of 1,028,000oz (18Mt at 1.77g/t Au) (JORC 2012) was reported. A Feasibility Study is scheduled for finalisation by end-2019 and a development decision soon after.

Extensive metallurgical test work has confirmed a high average overall gold recovery of ~92% for the combined Kunche, Bepkong and Julie deposits.

Mineral Resources have been progressively grown through a focused, systematic approach to the exploration of the Company's 2,400km² licence holdings. These encompass large tracts of prospective Birimian terrain, the rocks that host the majority of West Africa's gold mines.

Much of the tenure is covered in soil, alluvium or laterite, so most discoveries have been 'blind'. Azumah anticipates Mineral Resources will substantially grow as it continues to generate and test its extensive pipeline of targets.

Azumah has two 15-year Mining Leases over its principal deposits (Ghana government holds a 10% free carried interest in their 'rights and obligations' and is also entitled to a 5% gross gold royalty).

No technical, social or environmental impediments to development have been identified, no communities need to be relocated and rehoused, and there is strong support from key stakeholders for the Project.

The Project benefits from excellent regional infrastructure including grid power to site; good quality bituminised and non-bituminised roads, easy access to water, a 2km sealed airstrip at the regional centre of Wa and good general communications.

Ibaera Funding Transaction

All of Azumah's Ghana interests are held through its Ghana subsidiary, Azumah Resources Ghana Limited (AZG).

In 2017 Azumah executed a transformative Earn-In and Shareholders Agreement (EISA) with Perth managed private equity group, Ibaera Capital GP Limited (Ibaera), whereby Ibaera can initially earn a 42.5% interest in AZG, and therefore the Wa Gold Project, by spending US\$11.25M over two years (ASX release 1 September 2017).

Ibaera is backed by a US-based +US\$1.5 billion natural resources focused investment fund. Before committing to the Project, Ibaera reviewed many other international resource projects and, having selected the Azumah Project, undertook comprehensive due diligence before committing to the EISA.

Ibaera's owners, principals and management are all highly regarded geologists, engineers and financiers and, pursuant to the EISA, are now managing all facets of the Project.

Previously reported information

This report includes information that relates to Ore Reserves, Mineral Resources, production targets and forecast financial information derived from production targets which was prepared and first disclosed under JORC Code 2012. The information was extracted from the Company's previous ASX announcements as follows:

- Mineral Resources: 2 September 2014 "Azumah Increases Ore Reserves 45%"
- Mineral Resources: 28 September 2018 "Mineral Resources Increased 21% to 2.5Moz"
- Mineral Resources: 2 July 2019 "Maiden Bepkong 'Underground' Mineral Resource of 279,700oz at 3.59g/t Au"

- Ore Reserves: 30 January 2019 “Ore Reserve and Study Progress Update”

The Company confirms that it is not aware of any new information or data that materially affects the information included in the original market announcements and, in the case of reporting of Ore Reserves and Mineral Resources that all material assumptions and technical parameters underpinning the estimates in the relevant market announcements continue to apply and have not materially changed. The Company confirms that the form and context in which any Competent Person’s findings are presented have not been materially modified from the original market announcement.

Statements of Competent Persons for the various Mineral Resource Estimates and Ore Reserve Estimates can all be found on the Company's website at: http://www.azumahresource.com.au/projects-competent_persons.php

Forward-Looking Statements

All statements other than statements of historical fact included in this document including, without limitation, statements regarding plans and objectives of Azumah, are forward-looking statements. Forward-looking statements can be identified by words such as ‘anticipate’, ‘believe’, ‘could’, ‘estimate’, ‘expect’, ‘future’, ‘intend’, ‘may’, ‘opportunity’, ‘plan’, ‘potential’, ‘project’, ‘seek’, ‘will’ and other similar words that involve risks and uncertainties. These statements are based on an assessment of present economic and operating conditions, and on a number of assumptions regarding future events and actions that are expected to take place. Such forward-looking statements are not guarantees of future performance and involve known and unknown risks, uncertainties, assumptions and other important factors, many of which are beyond the control of the Company, its directors and management of Azumah that could cause Azumah’s actual results to differ materially from the results expressed or anticipated in these statements.

The Company cannot and does not give any assurance that the results, performance or achievements expressed or implied by the forward-looking statements contained on this website will occur and investors are cautioned not to place any reliance on these forward-looking statements. Azumah does not undertake to update or revise forward-looking statements, or to publish prospective financial information in the future, regardless of whether new information, future events or any other factors affect the information contained on this website, except where required by applicable law and stock exchange listing requirements.

Table A: Mineral Resource Estimate – JORC Code 2012 – Updated 19 June 2019

| Deposit | Measured | | | Indicated | | | Measured + Indicated | | | Inferred | | | Grand Total | | | |
|------------------|----------------|---------------|------------|----------------|---------------|------------|----------------------|---------------|------------|------------------|---------------|------------|----------------|---------------|------------|------------------|
| | Cut-Off Au g/t | Tonnes (Kt) | Au g/t | Ounces | Tonnes (Kt) | Au g/t | Ounces | Tonnes (Kt) | Au g/t | Ounces | Tonnes (Kt) | Au g/t | Ounces | Tonnes (Kt) | Au g/t | Ounces |
| Wa-Lawra: | | | | | | | | | | | | | | | | |
| Kunche | 0.5 | 8,835 | 1.6 | 446,000 | 3,404 | 1.3 | 145,000 | 12,239 | 1.5 | 591,000 | 7,616 | 1.0 | 255,700 | 19,855 | 1.3 | 846,500 |
| Bepkong o/c | 0.5 | 3,163 | 1.8 | 185,000 | 728 | 1.4 | 33,000 | 3,704 | 1.7 | 218,000 | 462 | 1.4 | 20,000 | 4,354 | 1.7 | 237,900 |
| Bepkong u/g | 2.0 | 16 | 4.3 | 2 | 1,270 | 4.1 | 165,000 | 1,286 | 4.1 | 168,000 | 1,138 | 3.1 | 112,000 | 2,424 | 3.6 | 279,700 |
| Aduane | 0.5 | | | | 322 | 1.2 | 12,800 | 322 | 1.2 | 12,800 | 1,491 | 1.3 | 59,900 | 1,812 | 1.3 | 72,700 |
| Kunche NW | 0.5 | | | | | | | | | | 694 | 1.1 | 25,400 | 694 | 1.1 | 25,400 |
| Yagha | 0.5 | | | | | | | | | | 333 | 1.3 | 13,400 | 333 | 1.3 | 13,400 |
| Wa East: | | | | | | | | | | | | | | | | |
| Julie | 0.5 | 1,490 | 2.1 | 101,000 | 9,300 | 1.9 | 572,100 | 10,790 | 1.9 | 673,000 | 6,360 | 1.7 | 352,000 | 17,150 | 1.9 | 1,025,000 |
| Collette | 0.5 | | | | | | | | | | 1,690 | 1.5 | 79,000 | 1,690 | 1.5 | 79,000 |
| Julie West | 1.0 | | | | 455 | 4.0 | 58,900 | 455 | 4.0 | 58,900 | 68 | 2.4 | 5,100 | 523 | 3.8 | 64,100 |
| Danyawu | 1.0 | | | | 105 | 4.2 | 14,200 | 105 | 4.2 | 14,200 | 38 | 1.5 | 1,800 | 143 | 3.5 | 16,000 |
| Alpha/Bravo | 1.0 | | | | | | | | | | 148 | 4.2 | 20,000 | 148 | 4.2 | 20,000 |
| Josephine | 1.0 | | | | 709 | 1.5 | 34,500 | 709 | 1.5 | 34,500 | 580 | 1.5 | 28,600 | 1,290 | 1.5 | 63,100 |
| Manwe | 1.0 | | | | 257 | 2.1 | 17,300 | 257 | 2.1 | 17,300 | 192 | 1.5 | 9,400 | 450 | 1.9 | 26,700 |
| Total | | 13,504 | 1.7 | 732,002 | 16,550 | 2.0 | 1,052,800 | 29,867 | 1.8 | 1,787,700 | 20,810 | 1.5 | 982,300 | 50,866 | 1.7 | 2,769,500 |

- Note: Values have been rounded.
- A lower cut-off of 0.5g/t Au was used for Kunche, Bepkong o/c (open-cut), Aduane, Julie and Collette, and a lower cut-off of 1.0g/t Au was used for Julie West and Danyawu. A lower cut-off of 2.0g/t was used for Bepkong u/g (underground).

Table B: Ore Reserve Summary – Updated 30 January 2019

| (As at January 2019) | Proved | | | Probable | | | Total | | |
|----------------------|-------------|--------------|----------------|-------------|--------------|----------------|-------------|--------------|------------------|
| | Tonnes (Mt) | Grade g/t Au | Gold oz | Tonnes (Mt) | Grade g/t Au | Gold Oz | Tonnes (Mt) | Grade g/t Au | Gold oz |
| Kunche | 8.0 | 1.51 | 388,600 | 0.9 | 1.65 | 47,900 | 8.9 | 1.52 | 436,500 |
| Bepkong | 2.4 | 1.65 | 124,400 | 0.7 | 1.41 | 31,300 | 3.0 | 1.59 | 155,800 |
| Aduane | | | | 0.2 | 1.11 | 7,100 | 0.2 | 1.11 | 7,100 |
| Julie | 1.2 | 2.11 | 83,600 | 3.6 | 2.24 | 258,600 | 4.8 | 2.21 | 342,200 |
| Julie West | | | | 0.4 | 3.59 | 49,300 | 0.4 | 3.59 | 49,300 |
| Danyawu | | | | 0.1 | 4.63 | 10,500 | 0.1 | 4.63 | 10,500 |
| Josephine | | | | 0.3 | 1.29 | 13,800 | 0.3 | 1.29 | 13,800 |
| Manwe | | | | 0.2 | 1.91 | 13,100 | 0.2 | 1.91 | 13,100 |
| Total | 11.6 | 1.60 | 596,700 | 6.4 | 2.09 | 431,500 | 18.0 | 1.77 | 1,028,200 |

Note: Values have been rounded